



Arcons Technology, Inc
159 Bay View Drive, San Carlos CA
info@arconstech.com
www.arconstech.com

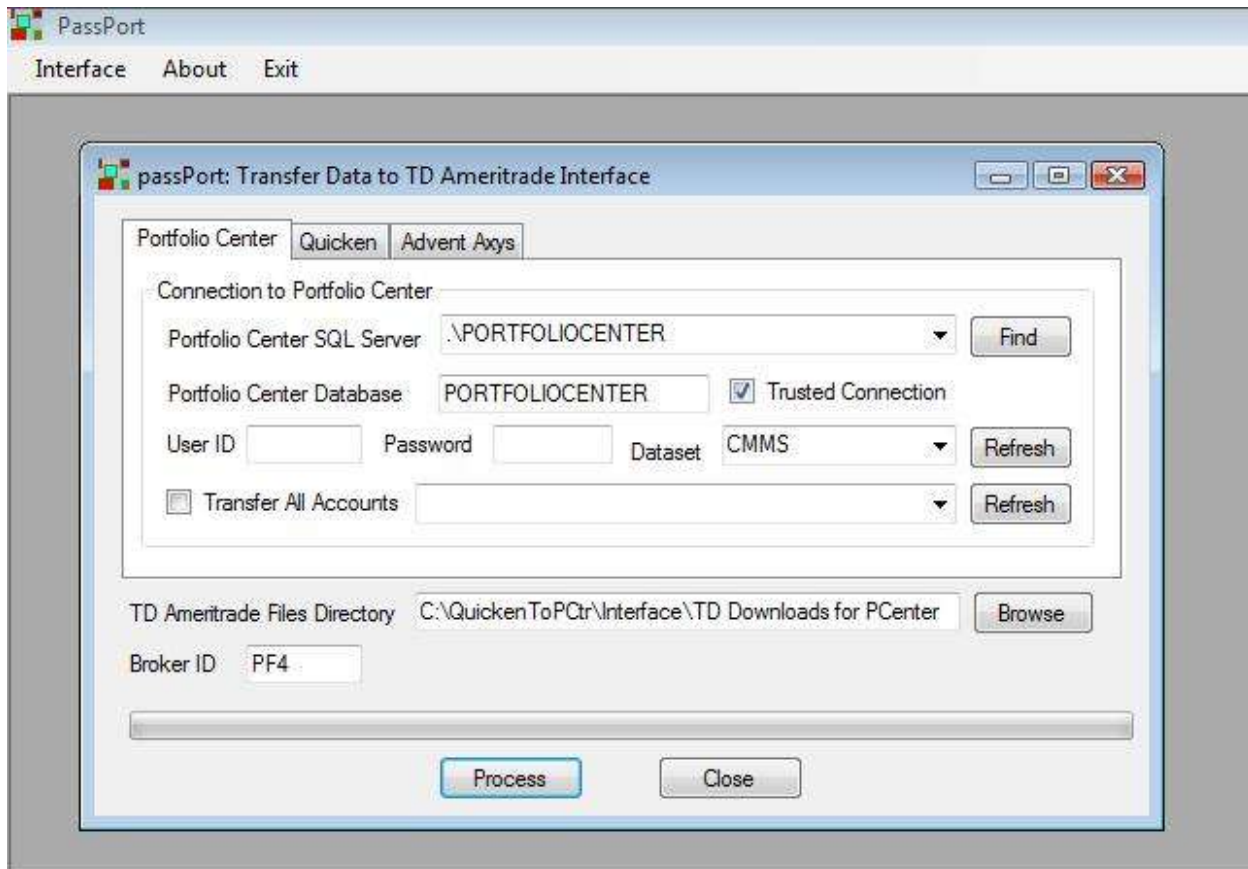
passPort – Historical Data Conversion between Portfolio Management Systems

Passport allows users to transfer all their historical data from one portfolio management system to another.

Schwab Portfolio Center

PassPort supports historical data transfer to Schwab Portfolio Center in the following ways:

- Quicken Data to Portfolio Center
 - This is useful when your new/existing clients bring in their Quicken files. These can be directly put into Portfolio Center. If you have the TD Ameritrade Interface installed, you can opt to see these in the interface, accept/reject transactions and then post them to Portfolio Center.
- Advent Axys Data to Portfolio Center
 - This is useful when you are converting from Advent Axys to Portfolio Center. The following data is converted:
 - Client Data
 - Transactions
 - Prices
 - Security information
- Portfolio Center to Portfolio Center
 - This is useful when you are moving partial data from one Portfolio Center installation to another within the same or a different SQL Server.



Scottrade Portfolio Director

PassPort support historical data transfer to Scottrade's Portfolio Director in the following ways:

- Portfolio Center to Portfolio Director
 - This is useful when you are converting from Portfolio Center to Portfolio Director. The following data is converted:
 - Client Data
 - Transactions
 - Prices
 - Security information



Innovations in Financial Technology

Arcons Technology, Inc
159 Bay View Drive, San Carlos CA
info@arconstech.com
www.arconstech.com

- Advent Axy's Data to Portfolio Director
 - This is useful when you are converting from Advent Axy's to Portfolio Director. The following data is converted:
 - Client Data
 - Transactions
 - Prices
 - Security information

